

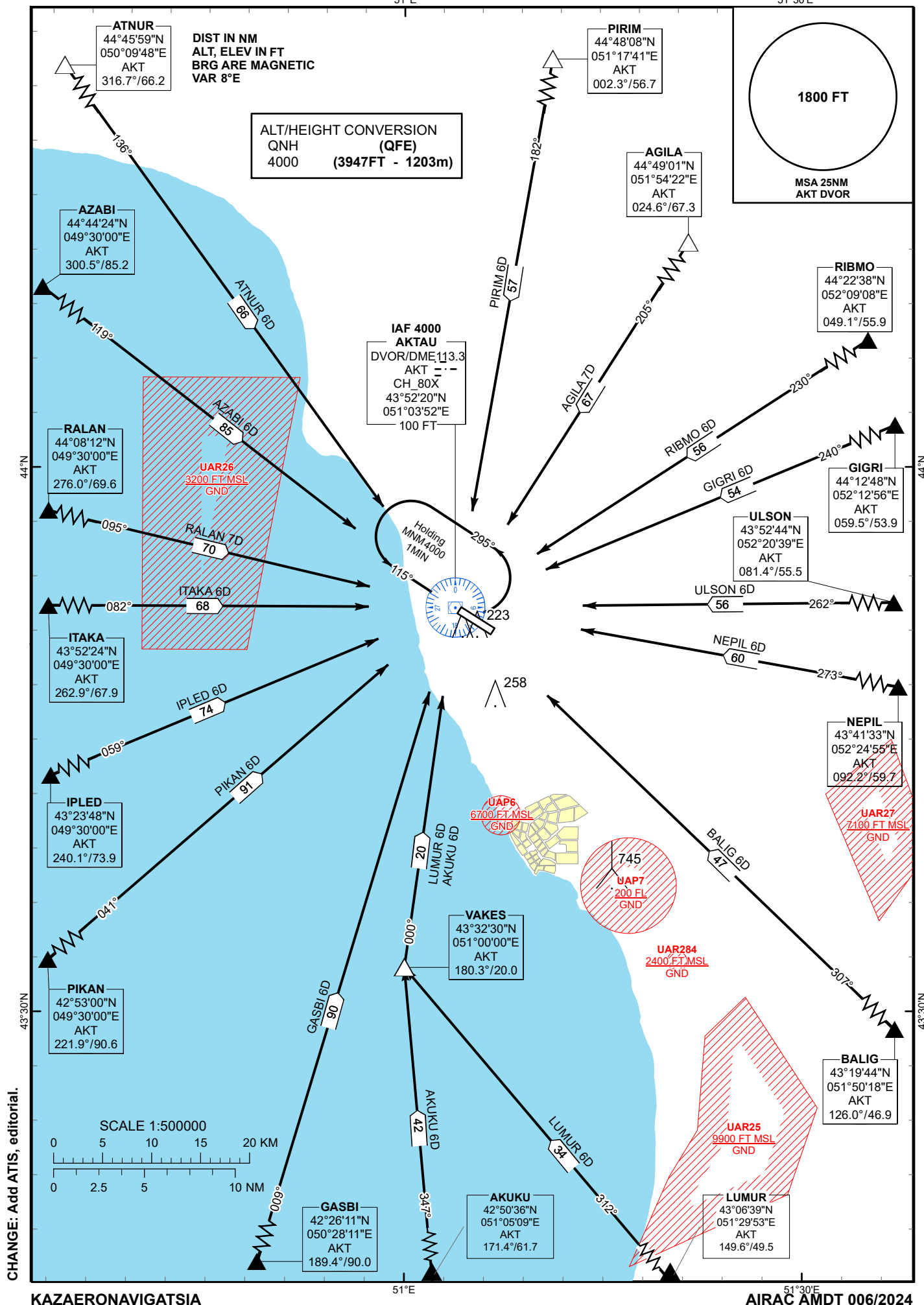
STANDARD ARRIVAL  
CHART - INSTRUMENT  
(STAR) - ICAO

TRANSITION ALTITUDE  
10000 FT

AKTAU TOWER 120.7  
AKTAU ATIS (EN) 130.1  
AKTAU ATIS (RU) 126.2

AGILA 7D AKUKU 6D ATNUR 6D AZABI 6D  
BALIG 6D GASBI 6D GIGRI 6D IPLED 6D  
ITAKA 6D LUMUR 6D NEPIL 6D PIKAN 6D  
PIRIM 6D RALAN 7D RIBMO 6D ULSON 6D

AKTAU  
RWY 29



CHANGE: Add ATIS, editorial.

STANDARD ARRIVAL ROUTES – INSTRUMENT (STAR) AKTAU RWY 29	
<b>PIRIM 6D</b> After crossing PIRIM (R002.3° D56.7 AKT) proceed on track 182° to AKT. Crossing FL at PIRIM are by ATC. Cross AKT at 4000.	<b>AKUKU 6D</b> After crossing AKUKU (R171.4° D61.7 AKT) proceed on track 347° to VAKES (R180.3° D20.0 AKT). After crossing VAKES, proceed on track 000° to AKT. Crossing FL at AKUKU are by ATC. Cross AKT at 4000.
<b>AGILA 7D</b> After crossing AGILA (R024.6° D67.3 AKT) proceed on track 205° to AKT. Crossing FL at AGILA are by ATC. Cross AKT at 4000.	<b>GASBI 6D</b> After crossing GASBI (R189.4° D90.0 AKT) proceed on track 009° to AKT. Crossing FL at GASBI are by ATC. Cross AKT at 4000.
<b>RIBMO 6D</b> After crossing RIBMO (R049.1° D55.9 AKT) proceed on track 230° to AKT. Crossing FL at RIBMO are by ATC. Cross AKT at 4000.	<b>PIKAN 6D</b> After crossing PIKAN (R221.9° D90.6 AKT) proceed on track 041° to AKT. Crossing FL at PIKAN are by ATC. Cross AKT at 4000.
<b>GIGRI 6D</b> After crossing GIGRI (R059.5° D53.9 AKT) proceed on track 240° to AKT. Crossing FL at GIGRI are by ATC. Cross AKT at 4000.	<b>IPLIED 6D</b> After crossing IPLIED (R240.1° D73.9 AKT) proceed on track 059° to AKT. Crossing FL at IPLIED are by ATC. Cross AKT at 4000.
<b>ULSON 6D</b> After crossing ULSON (R081.4° D55.5 AKT) proceed on track 262° to AKT. Crossing FL at ULSON are by ATC. Cross AKT at 4000.	<b>ITAKA 6D</b> After crossing ITAKA (R262.9° D67.9 AKT) proceed on track 082° to AKT. Crossing FL at ITAKA are by ATC. Cross AKT at 4000.
<b>NEPIL 6D</b> After crossing NEPIL (R092.2° D59.7 AKT) proceed on track 273° to AKT. Crossing FL at NEPIL are by ATC. Cross AKT at 4000.	<b>RALAN 7D</b> After crossing RALAN (R276.0° D69.6 AKT) proceed on track 095° to AKT. Crossing FL at RALAN are by ATC. Cross AKT at 4000.
<b>BALIG 6D</b> After crossing BALIG (R126.0° D46.9 AKT) proceed on track 307° to AKT. Crossing FL at BALIG are by ATC. Cross AKT at 4000.	<b>AZABI 6D</b> After crossing AZABI (R300.5° D85.2 AKT) proceed on track 119° to AKT. Crossing FL at AZABI are by ATC. Cross AKT at 4000.
<b>LUMUR 6D</b> After crossing LUMUR (R149.6° D49.5 AKT) proceed on track 312° to VAKES (R180.3° D20.0 AKT). After crossing VAKES, proceed on track 000° to AKT. Crossing FL at LUMUR are by ATC. Cross AKT at 4000.	<b>ATNUR 6D</b> After crossing ATNUR (R316.7° D66.2 AKT) proceed on track 136° to AKT. Crossing FL at ATNUR are by ATC. Cross AKT at 4000.